

July 22, 2019

Mr. Ridgely Mauck
NH Department of Environmental Services
Alteration of Terrain Bureau
29 Hazen Drive
PO Box 95
Concord, NH 03302

Re: Seacoast Reliability Project (SEC Docket 2015-04); three Newington laydown areas

Dear Ridge,

This letter provides you with identification of three laydown areas in the Town of Newington to be used for the construction of the Seacoast Reliability Project. This submittal is to comply with Condition 7 in the recommended Alteration of Terrain permit, dated October 29, 2019 adopted by the NH Site Evaluation Committee.

- *7. The Applicant shall identify to NHDES all marshaling yards, laydown areas and off-right-of-way access ways not currently identified for review prior to their construction.*

The three laydown areas are shown on Figure 1. They consist of a private lot (Shattuck Way; Figure 2) and two on Town of Newington facilities at their Department of Public Works (DPW; Figure 3) and the Town Offices (Figure 4).

- The Shattuck Way site is under development, and recently received an Alteration of Terrain permit (File #190306-035). It is approximately 11.5 acres in size, including some freshwater wetlands. Approximately 4 acres will be developed by Eversource and used as a laydown facility. Freshwater wetlands occur on the site but no wetlands will be affected by the development. No cultural resources were found on the site.
- The DPW area is approximately 0.25 acres in size, is previously developed with a mix of pavement and mown grass, and contains no wetland or cultural resources. No additional clearing or site improvement is proposed.
- The space at the Newington Town offices is an existing paved parking area approximately 0.6 acres in size, and contains no wetland or cultural resources. No additional clearing or site improvement is proposed.

We are also forwarding a copy to the SEC as required. Please contact me at ((603) 634-3256; kurt.nelson@eversource.com) or Sarah Allen ((603)-637-1158; sallen@normandeau.com) if you have questions or comments.

Sincerely,

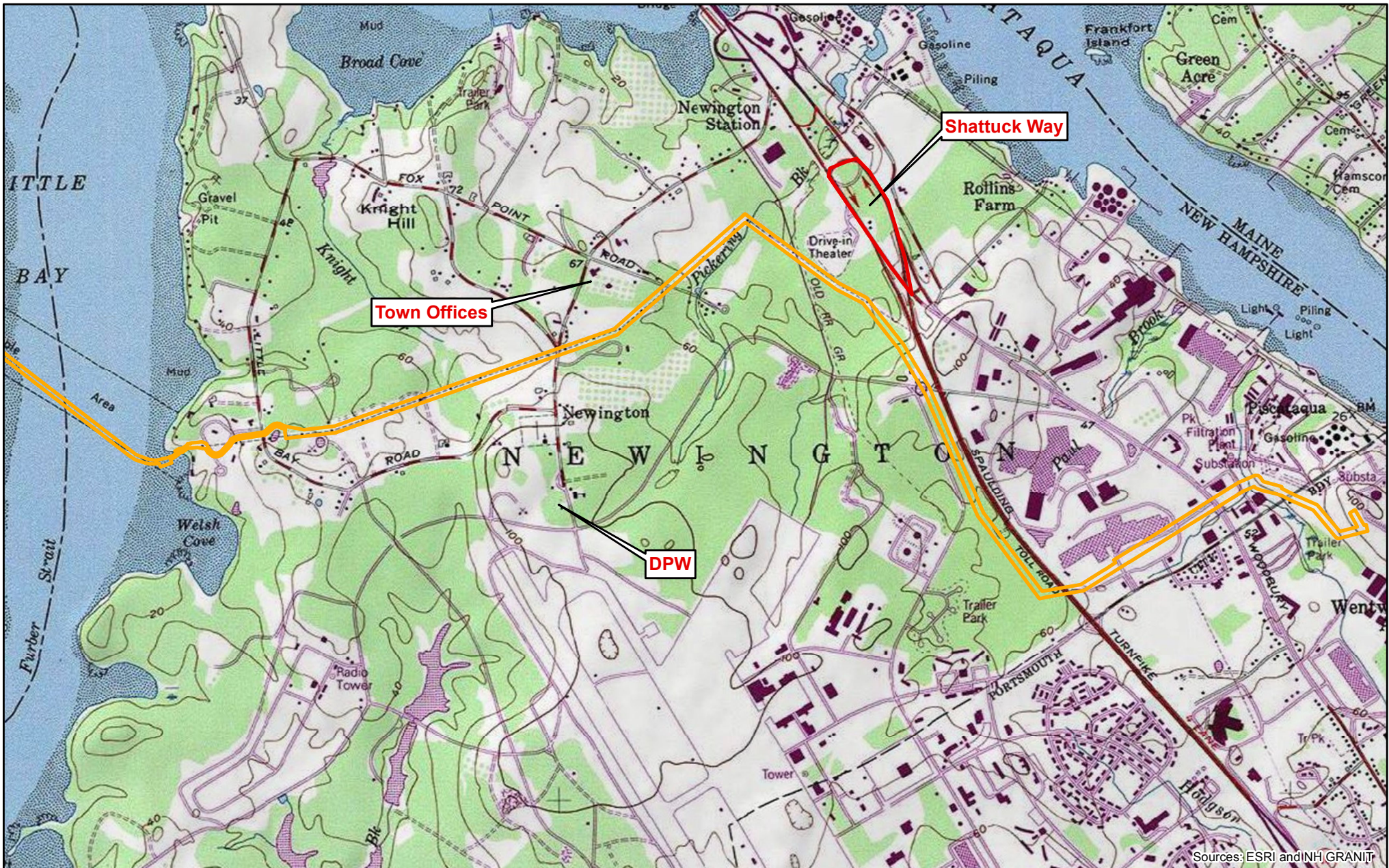


for



Kurt Nelson
NH Licensing and Permitting Specialist

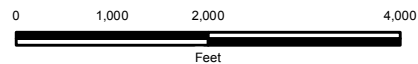
Cc:

Dave Price (DES)
Kurt Nelson (Eversource)
Dena Champy (Eversource)
Adam Dumville (McLane Middleton)



Sources: ESRI and INH GRANIT

-  Project Area
-  SRP Laydown Area

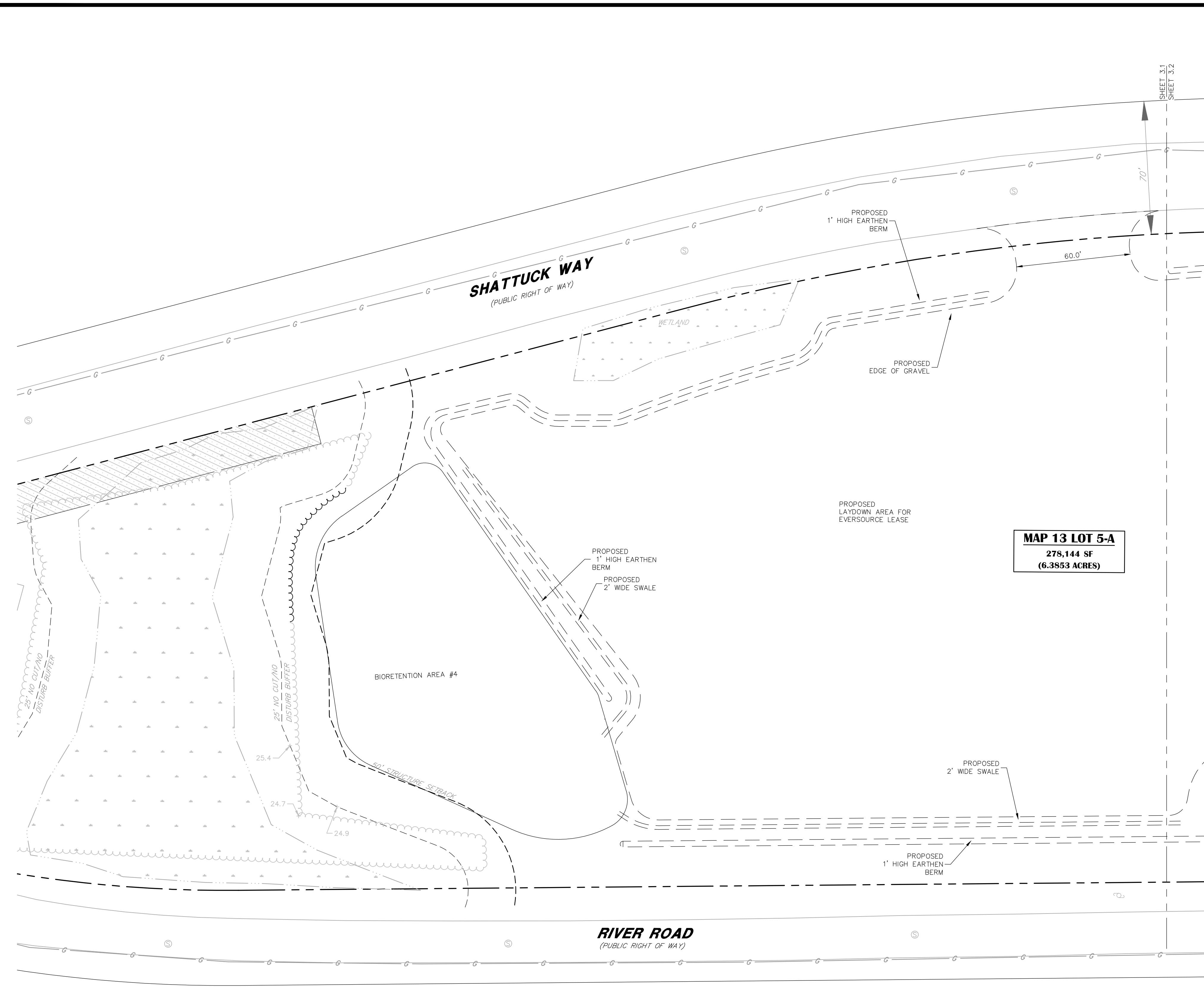


EVERSOURCE
ENERGY

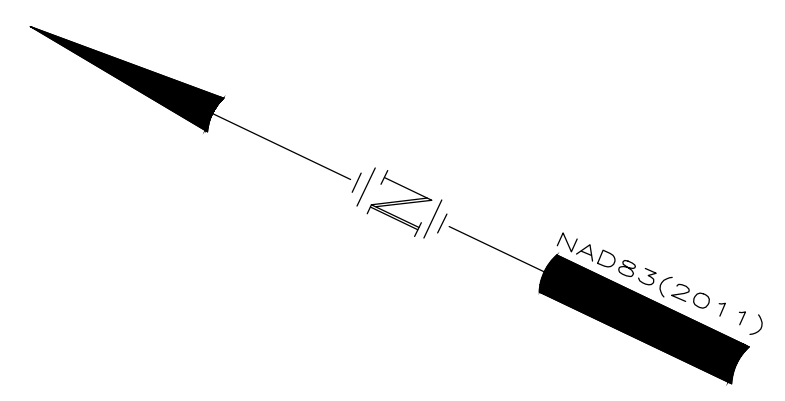
 **NORMANDEAU ASSOCIATES**
ENVIRONMENTAL CONSULTANTS

Seacoast Reliability Project
Figure 1

Town of Newington
Laydown Areas



LEGEND	
BC	BITUMINOUS CURB
OC	ON-CENTER
R	RADIUS
TYP	TYPICAL
---	PROPERTY LINE
---	EXISTING DRAINAGE EASEMENT
---	EXISTING GAS EASEMENT
---	EXISTING GAS LINE
---	EXISTING DRAINAGE EASEMENT
---	EXISTING GAS EASEMENT



MAP 13 LOT 5-A
 278,144 SF
 (6.3853 ACRES)

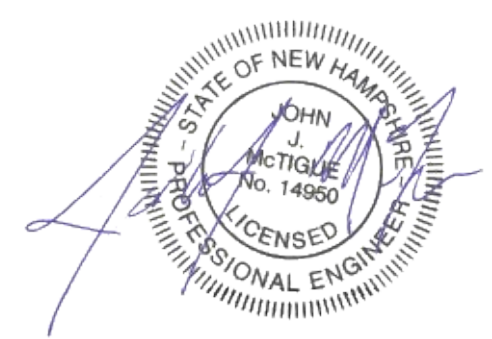
Figure 2A

SITE DEVELOPMENT PLANS

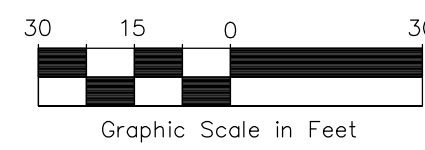
TAX MAP 13 LOT 7-A
LAYOUT PLAN
 THE STORAGE BARN OF NEWINGTON
 RIVER ROAD & SHATTUCK WAY
 NEWINGTON, NEW HAMPSHIRE

OWNED BY
THE STORAGE BARN OF NEWINGTON LLC

SCALE: 1"=30' (22X34)
 1"=60' (11X17) SEPTEMBER 27, 2018

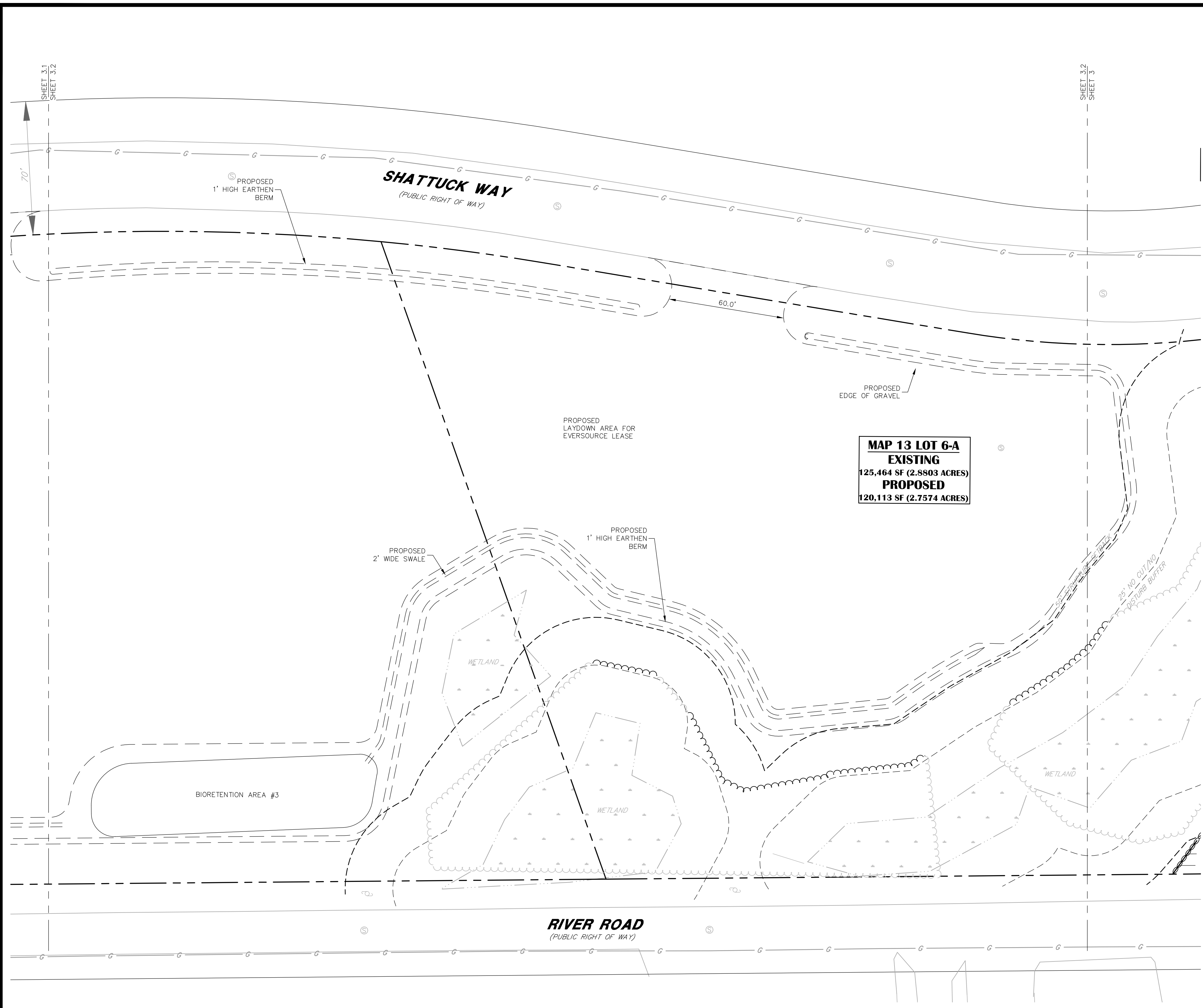


Copyright 2019 © Thomas F. Moran, Inc.
 48 Constitution Drive, Bedford, N.H. 03110
 All rights reserved. These plans and materials may not be copied, duplicated, replicated or otherwise reproduced in any form whatsoever without the prior written permission of Thomas F. Moran, Inc.
 This plan is not effective unless signed by a duly authorized officer of Thomas F. Moran, Inc.

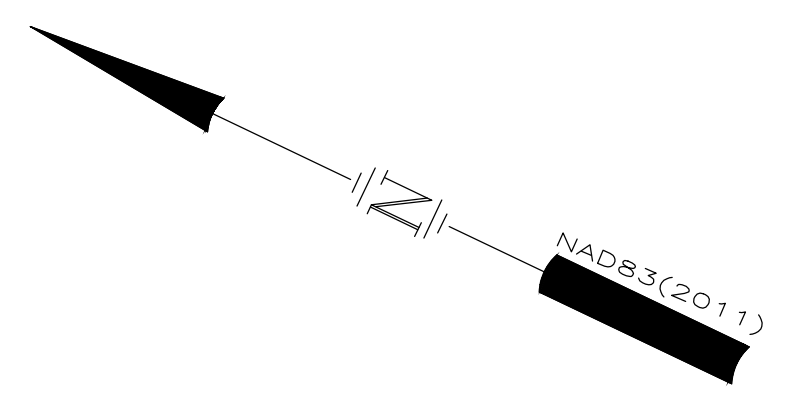


REV.	DATE	DESCRIPTION	DR	CK
2	06/23/19	Revised Bioretention Area Per AoI Comments	JJM	
1	06/17/19	New Sheet	JJM	

		Civil Engineers Structural Engineers Traffic Engineers Land Surveyors Landscape Architects Scientists	170 Commerce Way, Suite 102 Portsmouth, NH 03801 Phone (603) 431-2222 Fax (603) 431-0910 www.TFMoran.com
			C-3.1



LEGEND	
BC	BITUMINOUS CURB
OC	ON-CENTER
R	RADIUS
TYP	TYPICAL
---	PROPERTY LINE
---	EXISTING DRAINAGE EASEMENT
---	EXISTING GAS EASEMENT
---	EXISTING GAS LINE
---	EXISTING DRAINAGE EASEMENT
---	EXISTING GAS EASEMENT



MAP 13 LOT 6-A
EXISTING
 125,464 SF (2.8803 ACRES)
PROPOSED
 120,113 SF (2.7574 ACRES)

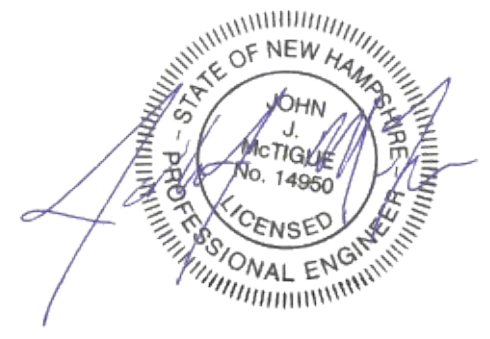
Figure 2B

SITE DEVELOPMENT PLANS

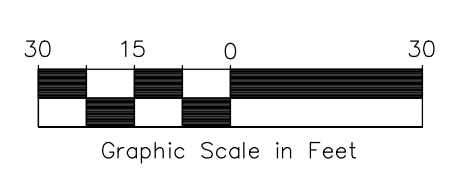
TAX MAP 13 LOT 7-A
LAYOUT PLAN
THE STORAGE BARN OF NEWINGTON
RIVER ROAD & SHATTUCK WAY
NEWINGTON, NEW HAMPSHIRE

OWNED BY
THE STORAGE BARN OF NEWINGTON LLC

SCALE: 1"=30' (22X34)
 1"=60' (11X17) SEPTEMBER 27, 2018



Copyright 2019 © Thomas F. Moran, Inc.
 48 Constitution Drive, Bedford, N.H. 03110
 All rights reserved. These plans and materials may not be copied, duplicated, replicated or otherwise reproduced in any form whatsoever without the prior written permission of Thomas F. Moran, Inc.
 This plan is not effective unless signed by a duly authorized officer of Thomas F. Moran, Inc.



REV.	DATE	DESCRIPTION	JJM	JJM
1	06/17/19	New Sheet	JJM	JJM

		Civil Engineers Structural Engineers Traffic Engineers Land Surveyors Landscape Architects Scientists	170 Commerce Way, Suite 102 Portsmouth, NH 03801 Phone (603) 431-2222 Fax (603) 431-0910 www.TFMoran.com

47106.02	DR	JRW	FB				
	CK	JPL	CADFILE	Layout.dwg			

C-3.2

Figure 3



Figure 4

